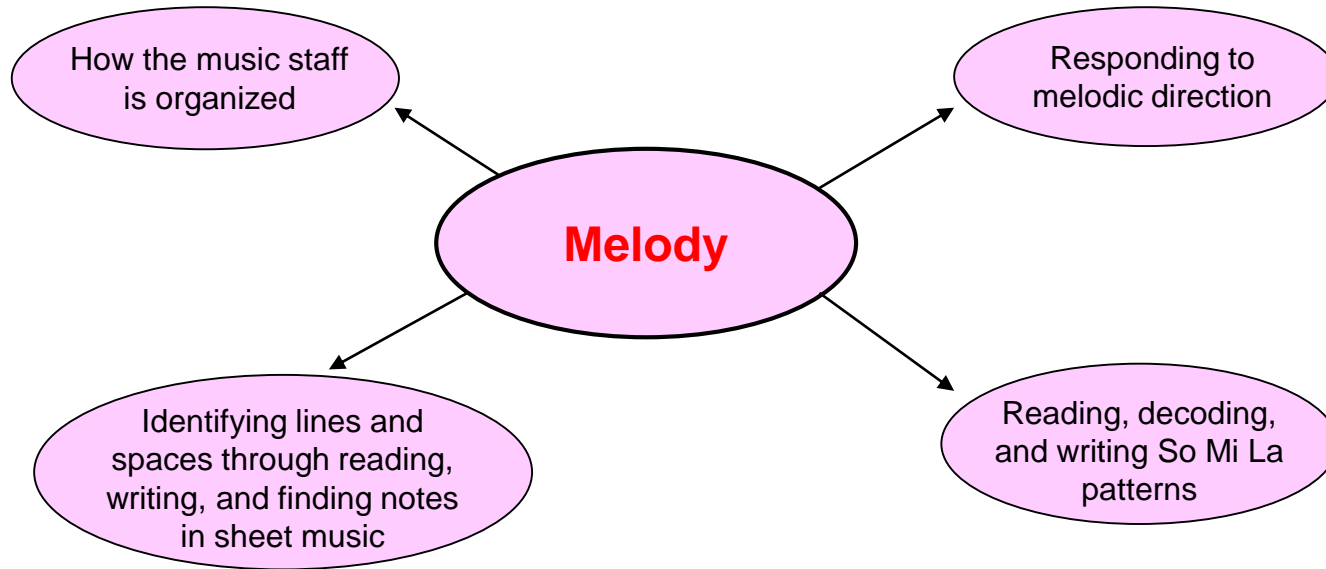


# Music

## GRADE 2- MELODY



### Essential Understandings:

- We use high, low, up, down, and same to describe melodic direction and pitch.
- We use So, Mi, and La to describe high, middle, and low notes.
- We can listen to the pitches of notes and give them names.
- We can differentiate between lines and spaces on a 5 line staff.
- Music notes move stepwise up, down, or stay the same on the staff by going “line-space-line-space”.

### Content Vocabulary:

High/Low  
Up/Down/Same  
Solfege  
So, Mi, La  
Staff  
Lines/Spaces